

HW #1 Examples - Angles

Classify each angle as acute, obtuse, right, or straight.

Draw an angle with the given measurement.

1)



- A) obtuse
- B) straight
- C) right
- D) acute

2) 25°

- A)
- B)
- C)
- D)
- E)

Convert problems 3 and 4 into degrees or radians.

3) 315°

4) $\frac{3\pi}{4}$

HW #1 Examples - Angles

Classify each angle as acute, obtuse, right, or straight.

Draw an angle with the given measurement.

1)



- A) obtuse
- C) right
- *B) straight
- D) acute

2) 25°

- A)
- B)
- C)
- *D)
- E)

Convert problems 3 and 4 into degrees or radians.

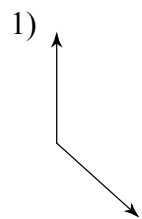
3) 315°
 $\frac{7\pi}{4}$

4) $\frac{3\pi}{4}$
 135°

HW #1 Examples - Angles

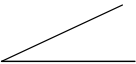
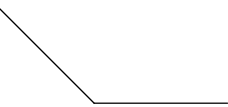
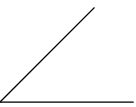
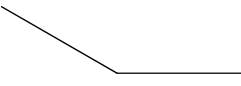
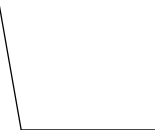
Classify each angle as acute, obtuse, right, or straight.

Draw an angle with the given measurement.



- A) right
- B) obtuse
- C) straight
- D) acute

2) 135°

- A) 
- B) 
- C) 
- D) 
- E) 

Convert problems 3 and 4 into degrees or radians.

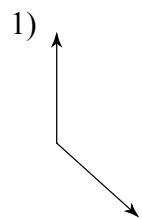
3) 300°

4) $\frac{\pi}{3}$

HW #1 Examples - Angles

Classify each angle as acute, obtuse, right, or straight.

Draw an angle with the given measurement.



- A) right
- *B) obtuse
- C) straight
- D) acute

2) 135°

- A)
- *B)
- C)
- D)
- E)

Convert problems 3 and 4 into degrees or radians.

3) 300°

$$\frac{5\pi}{3}$$

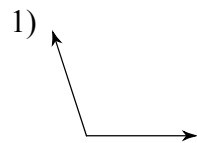
4) $\frac{\pi}{3}$

$$60^\circ$$

HW #1 Examples - Angles

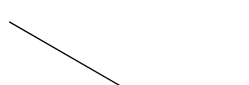

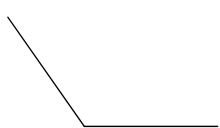
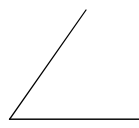
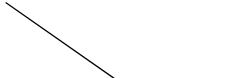
Classify each angle as acute, obtuse, right, or straight.

Draw an angle with the given measurement.



- A) straight
- B) obtuse
- C) acute
- D) right

2) 125°

- A) 
- B) 
- C) 
- D) 
- E) 

Convert problems 3 and 4 into degrees or radians.

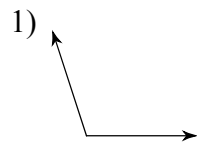
3) 240°

4) $\frac{11\pi}{6}$

HW #1 Examples - Angles

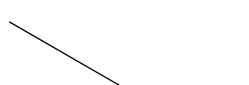

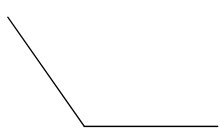
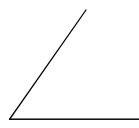
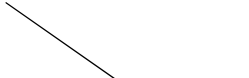
Classify each angle as acute, obtuse, right, or straight.

Draw an angle with the given measurement.



- A) straight
- C) acute
- *B) obtuse
- D) right

2) 125°

- A) 
- B) 
- *C) 
- D) 
- E) 

Convert problems 3 and 4 into degrees or radians.

3) 240°

$$\frac{4\pi}{3}$$

4) $\frac{11\pi}{6}$

$$330^\circ$$